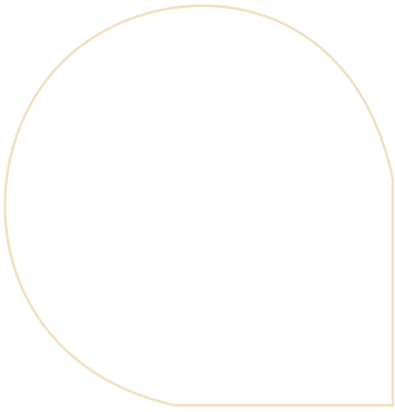




PALACE GROUP





CONTENTS

I. CORPORATE PROFILE	1
I.1. BACKGROUND INFORMATION	1
I.2. VISION	1
I.3. MISSION	1
I.4. VALUES	1
I.5. STRATEGIC INTENT	2
I.6. HUMAN RESOURCE DEVELOPMENT	2
2. PALACE GROUP'S CORE SERVICES	2
3. COMPANIES WITHIN PALACE GROUP	3
3.1. PALACE ENGINEERING SERVICES	3
3.2. PALACE REAL ESTATE	5
3.3. INTELLIGENT QUALITY CONTROL (IQC)	6
3.4. GRINPAL ENERGY MANAGEMENT SERVICES	7
3.5. GONDWANA ENVIRONMENTAL SOLUTIONS	7
4. CORPORATE SOCIAL RESPONSIBILITY	8
5. BRIEF PROJECTS OVERVIEW	8
6. PALACE GROUP FOOTPRINT	9



I. CORPORATE PROFILE

I.1. BACKGROUND INFORMATION

Palace Group is an infrastructure development and engineering group providing complementary, integrated and seamless infrastructure solutions to clients in the built environment worldwide. This South African owned multidisciplinary group has a network of subsidiary companies with offices in major centres in South Africa and other parts of SADC and the world.

Palace Group has extensive experience and an attractive track record. The Group has a technically, managerially competent and highly motivated team from all spheres of lives and countries that has been built over many years.

The Group has a client base that comprises mainly blue chip companies and it has enjoyed repeat business from its many satisfied customers over the past years, and shall continue to receive such support now and in the future.

I.2. VISION

The Group aims to grow from strength to strength, diversify into specific fields and become one of the largest diversified groups in Africa and the world at large.

I.3. MISSION

Palace Group as a multifaceted organisation, aims to satisfy the clients' needs through the provision of cost effective engineering solutions on time, within budget and appropriate standards. The Group is making a significant contribution to infrastructure and human capital development.

In support of this, we are committed:

- To be the preferred supplier of choice through sustained quality service
- To thrive with integrity and enterprise thereby creating stakeholder wealth and opportunities for employee advancement
- To encourage and support the empowerment of the previously disenfranchised individuals and communities
- To engage in equal opportunity development with special emphasis to the empowerment of women in the target groups
- To instill safety and environmental sensitivity within the Group

I.4. VALUES

Values important to Palace Group are:

- Professionalism
- Client Satisfaction
- Integrity
- Excellence
- Innovation
- Team work
- Environmental consciousness
- Social Empowerment



1.5. STRATEGIC INTENT

The Group intends to become a global player within its area of expertise through its network of companies, divisions and technically and managerially advanced staff, whilst subscribing to the principles of sustainable development, skills transfer and empowerment of the communities in which it operates.

1.6. HUMAN RESOURCE DEVELOPMENT

Palace Group is committed to equality for all employees in accordance with the law of the land; and supports employee advancement and development of technical, managerial and other skills of its employees.

The implementation of Palace Group's equal opportunity programme is based on:

- Selecting candidates from the target groups without compromising excellence in service delivery
- Training and skills development of existing and newly employed staff
- Making available assistance and bursary programmes to ensure skills development for the country and the world at large.

2. PALACE GROUP'S CORE SERVICES

The Group offers the following services:

- Power and Energy (generation, transmission, distribution, revenue protection and energy management)
- Property Development and Real Estate
- Infrastructure Development
- Building Engineering Services
- Consulting Electrical, Mechanical, Civil, Structural and Architectural Services
- Programme Management
- Project Management
- Facilities Management
- Turnkey Solutions
- Build Operate Train and Transfer (BOTT)
- Private Public Partnership (PPP)

Palace Group is active in the following sectors:

- Power and Energy (Generation, Transmission and Distribution) as well as Energy Management and Demand Side Management including Revenue Protection Technologies, Renewable Energy and Cogeneration Technologies
- Water and Water Resources
- Transportation
- Waste Water Treatment Plants and Potable Water Treatment Plants
- Municipal Services
- Energy Management and Demand Side Management including Revenue Protection Technologies
- Building Services (Electrical, Mechanical, Civil, Structural including Green building technologies)



3. COMPANIES WITHIN PALACE GROUP



PALACE TECHNOLOGIES

3.1. PALACE ENGINEERING SERVICES (PTY) LTD

(Trading as Palace Technologies)

BACKGROUND

Palace Technologies is a wholly owned subsidiary of Palace Group. Palace Technologies was the first Group subsidiary company that was incorporated in October 1987, as an electrical consulting engineering company. Its beginnings were in the Power Generation, Power Transmission and Petrochemical industries, with its first projects at Kendal Power Station, Beta Substation and Sasol 2 and 3 Tank Farm automation in Secunda, South Africa. It has now grown to cover more than consulting engineering projects.

Core Services

- Programme Management
- Project Management
- Engineering
- Architecture
- Quantity Survey
- Facilities Management
- BOT
- PPP

The following are Palace Technologies' operating divisions:

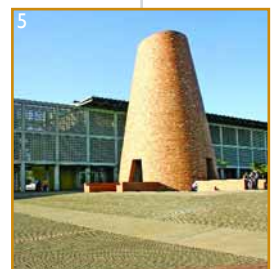
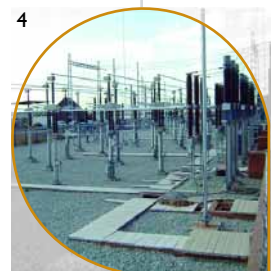
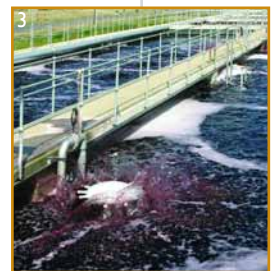
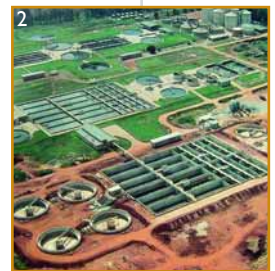
I. NATURAL RESOURCES BUILDING SERVICE AND INDUSTRIAL

The NRBI division is responsible for projects related to Power Generation, Building Services (industrial, commercial and domestic), Petrochemical, Mining, and Industrial in general. The established project management and design capabilities are in mechanical, electrical and civil/structural engineering, focussed on the abovementioned industries.

In particular we are experienced in the following:

- HVAC
- Fire detection and protection
- Wet services
- Electrical reticulation
- Building stand services
- Waste water treatment plants
- Water purification plants
- Industrial piping systems
- Materials handling systems

1. Normalisation & supply of remote prepaid metering and energy management project
2. Waterval Electrical and Installation
3. Dye house and water treatment plant project in Swaziland
4. JIA Super sub-station
5. Walter Sisulu Square of Dedication
6. HVAC & Lighting Installation



The following are some of the large projects which NRBI has been involved with:

- Waste water treatment works for ERWAT
- Various Eskom projects related to their Power Generation Expansion program which includes a pumped storage scheme and a major housing project consisting of more than 2000 single and family living units
- Various sports stadia
- Department of Public Works projects such as services for hospitals, prisons, military bases, etc.

2. TRANSMISSION, DISTRIBUTION, ISMS AND DSM

The Transmission, Distribution, Integrated Services Management Systems (ISMS) and Demand-Side Management (DSM) division is mainly responsible for the following types of projects:

Transmission

- Design of new transmission lines
- Audit and inspection of existing transmission lines
- Aerial line inspections
- Construction Monitoring
- Project Management

Distribution

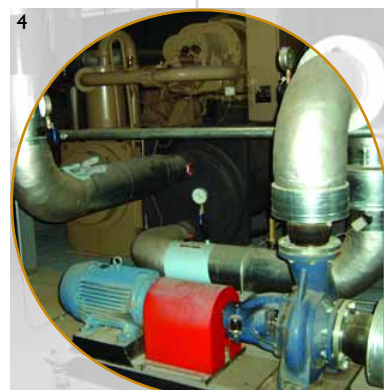
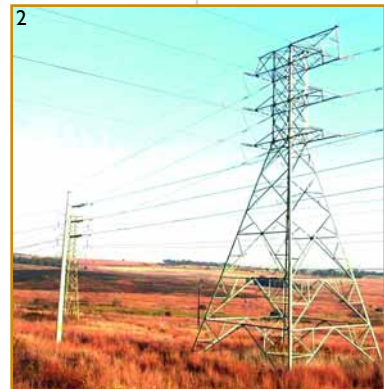
- Electrification designs
- Sub-transmission line designs up to 132kV
- Substation designs
- Line audits and normalisation
- Network refurbishment
- Medium Voltage (MV) and Low Voltage (LV) network designs
- Supply-Side Tariff analysis
- Demand-Side Tariff analysis
- Power Factor analysis and correction
- Metering systems
- SCADA systems
- Electrical network protection systems and schemes
- Data recordings
- Network master planning
- Street lighting designs
- High mast lighting designs
- Construction Monitoring
- Project Management

ISMS

- Automated Meter Reading (AMR)
- Revenue Protection
- Prepayment Metering
- Online Vending
- Power Line Communication Carrier (PLCC) systems

DSM

- Industrial energy management
- Commercial energy management
- Residential energy management
- Municipal energy management
- Energy audits
- Energy Efficiency designs and implementation
- Energy Efficient lighting systems
- Energy Efficient building systems
- Green Building designs
- Green Fields projects
- Heat pumps
- Renewable energy systems
- Solar systems
- Wind generation systems
- Hydro generation systems
- Project Management



1 & 2. 132 kv Double Circuit
Distribution Power Line
3 & 4. Air Conditioning System at
OR Tambo Airport,
Domestic Terminal

3. TRANSPORTATION, WATER AND RESIDENTIAL HOUSING

The core consultancy services offered by this division are Feasibility studies; Engineering design; Construction supervision; and Project Management in the following disciplines with respective services:

Transportation

- Traffic engineering
- Roads geometric and pavement design
- Storm water management
- Road materials investigations and analysis
- Road condition surveys, studies, and investigations
- Infrastructure maintenance and systems management
- Transportation policy and legislation

Water Supply and Sanitation

- Water resources planning and catchment studies
- Water conservation and demand management
- Water supply, reticulation, and water treatment plants
- Bulk sewerage, reticulation, and waste treatment plants
- Solid and liquid waste management
- Reservoirs and water towers
- Water and sewage pump stations
- Community and rural water supply

Structures and Houses

- Bridges and drainage structures
- Civil and structural engineering
- Earthwork and pavement design
- Water-retaining structures
- Storm water management
- Affordable housing development, health and educational facilities

Project Management

- Development of project management knowledge areas (integration, scope, time, cost, quality, human resources, communications, risk and procurement)
- Development of projects quality assurance standards
- Drawing and documentation control
- Repairs and maintenance program
- Tender and contract documentation
- Training and capacity building
- Institutional and social development

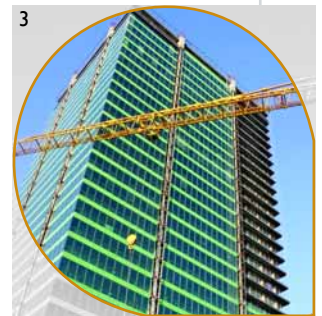
4. QUANTITY SURVEY, PROGRAM MANAGEMENT AND FACILITIES MANAGEMENT

- Pre-Contract Services
- Post-Contract Services
- Specialised Services
- Facilities Management Consultancy Services

5. ARCHITECTURE DIVISION

- Industrial
- Residential
- Sports Facilities
- Administration and Government Buildings
- Office Parks
- Urban Design

e-mail: pes@palacegroup.co.za



1. Duduza essential municipal civil engineering services
2. Bulk water trench, fittings & installation
(Under the Tsepisong Bulk Water Supply Project - on the West Rand)
3. Mechanical works project at Civitas Building



PALACE REAL ESTATE

3.2. PALACE REAL ESTATE (Pty) Ltd

- Property Development in the following sectors:
 - Residential
 - Commercial
 - Hospitality
 - Industrial
- Residential Sales
- Property Marketing
- Property Broking
 - Sales and Leasing of commercial and industrial property
- Facilities Management
- Valuations
- Land Acquisition



1. Elements Park View
2. Elements Tower Detail

Contact details:
Tel: 011 783 1206
Fax: 0866 840 037
e-mail: pre@palacegroup.co.za
www.palacereal.co.za

3.3. IQC (Pty) Ltd

(Trading as Malangeni Electrical & Civil Contractors)

Electrical

Supply, Installation and Commissioning of:

- Transformers and Switchgear
- Mini-Substations
- Sub-Stations
- Switchyards
- Transmission Lines up to 132kV
- Electrification of Townships , Industrial Parks etc
- Overhead Line Reticulation
- Underground Electrical Reticulation
- Refurbishment and Reconductoring of Overhead Lines
- Refurbishment of Existing Electrical Installations
- Metering Equipment
- System Reinforcement and Upgrading
- Street and Roadway Lighting
- High Mast Lighting including Television Quality Lighting for Sports Stadia
- Turnkey Projects
- Design, Supply, Install, Commissioning and Handover of a wide range of Projects including Financing
- Build, Operate and Transfer (BOT) Projects

Civil

- Water and Sewer Reticulation
- Roads and Storm water
- Housing Developments
- Bucket Eradication Projects
- Electrical Substations and Switchyards
- Landscaping and Grassing
- Fencing
- Supply of Cement and Aggregates

Revenue Management

- Meter Audits for both water and electrical
- Meter Readings for both water and electrical
- Meter Changes for both water and electrical
- Disconnections and Reconnections
- Remote Prepayment Metering and Automatic Meter Reading Systems
- Demand Side Management
- Energy Management for Residential, Commercial and Industrial Customers
- Turnkey Projects including Build Operate and Transfer Projects. Financing can be provided.

Additional Services

- Complete Township Development including Design, Construction and Handover using in - house Consultants, Architects and Township Development Experts
- Pump stations
- Sewage Works
- Water Treatment Works

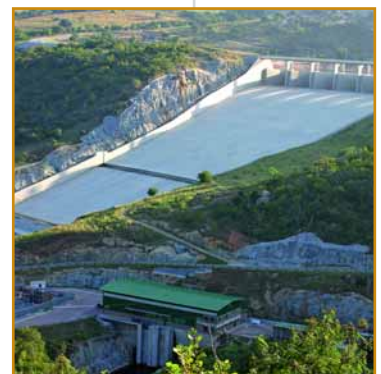
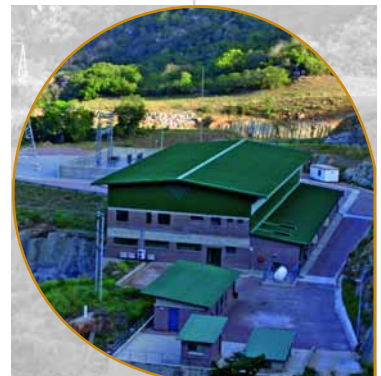
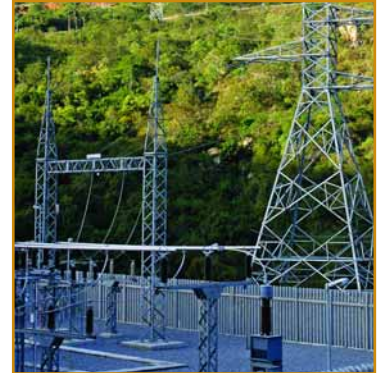
Contact Details:

Tel: 011 318 7840

Fax: 0866 890 440

e-mail: malangeni@palacegroup.co.za

www.malangeni.co.za





3.4. GRINPAL ENERGY MANAGEMENT SERVICES (Pty) Ltd

BACKGROUND

Grinpal is a wholly owned Palace Group subsidiary established in 1999. Grinpal provides conception to completion, turnkey solutions to Municipalities, Power Distribution utilities and developers worldwide, using state of the art energy management technologies, and utility revenue management solutions. Its internationally recognized prepaid meters are developed in-house with systems that offer improved utility revenue and service levels.

Grinpal's core competencies are in the following fields:

- Distribution Reticulation
- Consultancy and Project Management
- Intelligent metering
- Energy Management
- Management of revenue for distribution utilities

Services

Grinpal offers Remote Prepayment Metering Systems and Energy Management services for Residential, Commercial and Industrial customers.

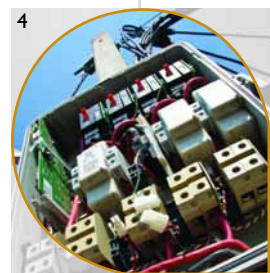
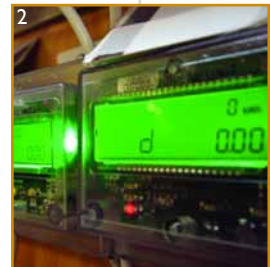
Contact details:

Tel: 012 749 2000

Fax: 012 749 2030

e-mail: info@grinpal.co.za

www.grinpal.co.za



1. Transformer
2. DS002 Display unit
3. IMOO Version2 Split Meters
4. 4-way pole top box



3.5. GONDWANA ENVIRONMENTAL SOLUTIONS (Pty) Ltd

Gondwana Environmental Services is an environmental company specializing in air quality, mine rehabilitation and remediation, environmental impact assessments and training. GES assists industry and government by providing sophisticated solutions to environmental issues in their efforts towards legal compliance of current and future environmental legislation.

Services

- Air Quality Services Environmental Impact assessments
- Mine Rehabilitation and Remediation Training

Contact details:

Tel: 011 787 6099

Fax: 011 787 3395

e-mail: info@gesza.co.za

www.gondwanagroup.co.za



1. Air Quality Analyzers
2. Air Quality Monitoring Station

4. CORPORATE SOCIAL RESPONSIBILITY

Palace Group believes and adheres to principles of sustainable development, skills transfer and empowerment of the communities within which we operate. The Group aims to initiate and invest in sustainable community programmes that will add value to communities in need.

Our CSI activities are based on four pillars:

- Development of women soccer
- Community empowerment and skills transfer to create wealth
- Staff participation in community based care projects
- Embracing and supporting HIV/AIDS and other terminal illnesses awareness, prevention and support to those affected by these illnesses

i. In developing women soccer, Palace Group established Palace Super Falcons Women's Academy in 2002. The Academy was not only spurred by on by the passion of the Group for young South African talent, but most important as a social development support in reducing the involvement of young girls in crime, drug abuse and other social ills by engaging them in a sport that is both participative and commercially viable.

ii. Palace Group has over the past few years, developed over 200 community based contractors some of whom are fully fledged contractors now.

iii. Over and above the investment we have made in social development, we have in recent times supported employees' direct active participation and contribution in community projects, by means of volunteerism and mentorship to communities within which we operate.



1. Palace Super Falcons players with journalist at the Falcons media brunch
2. Children at the OVC who received items collected on the Winter Pass-it-on Campaign
3. Palace staff with staff at the OVC at the Winter Pass-it-on handover in Alex
4. Palace Group staff at the seed planting project at Realogile Sec School
5. Palace Group's Thembi with students at Realogile Sec School
6. Learners from Thomas-Mofolo at Palace Group's Take a Girl Child to Work Day



5. BRIEF PROJECTS OVERVIEW

Some of our main projects undertaken in the past include:

- ERWAT waste water treatment works
- Power Generation Expansion program for Eskom
- Consulting electrical work on stadiums
- ACSA projects for the airports in OR Tambo and Durban (HVAC)
- Master planning work for Eskom at Ekurhuleni and other places
- Energy Management projects for various commercial properties and municipalities

To view a full list of past & present projects in the various sectors under the Group, please send an email to: busdevelop@palacegroup.co.za

6. PALACE GROUP FOOTPRINT



CONTACT DETAILS

Pathway (Sandton)

Physical address:
53A Albertyn Avenue
Off Katherine street, Wierda Valley
Postal Address:
Postnet Suit 405
Private Bag X 9924
2146
Tel: +27 11 783 1206
Fax: +27 11 783 1421
Email: pathway@palacegroup.co.za

Midrand (Palace Technologies)

Physical Address:
Building 5 Midridge Office (North)
IBG Office Park
Cnr New Road (West) and 6th Street
Midrand
Postal Address:
P.O. Box 3173
Halfway House
Midrand
1685
Tel: +27 11 653 1600
Fax: +27 11 318 0569
Email: midrand@palacegroup.co.za

Midrand (Malangeni)

Physical Address:
326 Azalea Road
Country View
Midrand
1682
Postal Address:
P.O. Box 1012
Ferndale
2016
Tel: +27 11 318 7840/4
Fax: +27 11 318 6714
Email: midrand@palacegroup.co.za

Pretoria

Physical Address:
Office 5, 2nd Floor
Burren Building
Kasteel Park
Jochemus Street
Erasmusklouf
Pretoria
Tel: +27 12 347 3779
Fax: +27 12 347 3776
Email: tshwane@palacegroup.co.za

Bloemfontein

Physical Address:
39C First Avenue
Westdene
Bloemfontein
9301
Postal Address:
Private Bag X11
Suite No. 24
Brandhof
Bloemfontein
9324
Tel: +27 51 448 0271
Fax: +27 51 448 0273
Email: bloemfontein@palacegroup.co.za

Durban

Physical Address:
61 Ramsay Avenue
Berea
Durban
4000
Postal Address:
P.O. Box 30427
Mayville
4000
Tel: +27 31 207 4062
Fax: +27 31 207 4156
Email: ethekwini@palacegroup.co.za

East London

Physical Address:
Arcadia Park (Old SBDC)
Off Commercial Road
Arcadia
East London
Tel: +27 43 722 8905
Fax: +27 43 743 6084
Email: buffalocity@palacegroup.co.za

Port Elizabeth

Physical Address:
1st Floor
University Chambers
26 Bird Street
Central 6000
Postal Address:
P.O. Bo x 350
Port Elizabeth
6000
Tel: +27 41 585 0590
Fax: +27 41 585 0591
Email: portelizabeth@palacegroup.co.za

Cape Town

Physical Address:
Room 206 A&B
Tokia Village
Vans Drive
Tokia
Postal Address:
P.O. Box 39305
Cape Town
7948
Tel: +27 21 712 2915
Fax: +27 21 713 4194
Email: capetown@palacegroup.co.za

Witbank

Physical Address:
First Floor, Hi-tech House
Cnr Lukin st/Botha Avenue
Witbank,1035
Postal address:
First Floor, Hi-tech House
Cnr Lukin st/Botha Avenue
Witbank,1035
Tel: +27 13 690 2580
Fax: +27 13 659 5969
Email: witbank@palacegroup.co.za

Mozambique

Physical Address:
Av. 24 de Julho No. 799
1st Floor
Maputo
Mozambique
Tel: +258 21 315120
Fax: +258 21 315121
Email: chairman@palacegroup.co.za

Swaziland

Physical Address:
Cooper Centre BLD
Office no. 14
Cooper Centre
Bypass Road
Mbabane
Tel: +268 404 0623
Fax: +268 404 0736
Email: mbabane@palacegroup.co.za

General Enquiries:

info@palacegroup.co.za

Business Development:

busdevelop@palacegroup.co.za

Communication related enquiries:

communications@palacegroup.co.za

Complaints or Suggestions:

chairman@palacegroup.co.za

Grinpal Energy Management:

Centurion

Physical address:
50 Oak Avenue
Highveld Techno Park, Centurion
Postal address:
P O Box 11212
Swartkop, 0051
Tel: +27 12 749 2000
Fax: +27 12 749 2030
Email: info@grinpal.co.za

Bruma

Physical address:
1 Lakeside Place
Enerst Oppenheimer Street, Bruma
Postal address:
P O Box 11212
Swartkop, 0051
Tel: +27 11 615 9208
Email: info@grinpal.co.za

Gondwana Environmental Solutions

Ontdekkers, Roodepoort
Physical address:
562 Ontdekkers Road
Florida Ext 3
Roodepoort
Johannesburg
Postal Address:
P.O. Box 158
Florida Hills
1716
Tel: +27 11 472 3112
Fax: +27 11 674 3705
Email: info@gesza.co.za
www.gondwanagroup.co.za